

HUTCHINSON TOWNSHIP

Each township has six files containing six sections in each, and one file containing all 36 sections.

Hutchinson01to06.pdf
Hutchinson07to12.pdf
Hutchinson13to18.pdf
Hutchinson19to24.pdf
Hutchinson25to30.pdf
Hutchinson31to36.pdf
HutchinsonAll36.pdf

The points are listed starting with the point above the SE corner and continuing in a counter-clockwise rotation around the section. This normally begins with the East point, Northeast, then North, but may also include Witness Corners, and/or Meander Corners.

Definitions

Witness Corner: A witness corner “stands in” when the true corner cannot be monumented or occupied because of difficult terrain or obstruction of the corner sight. The witness corner must be on the section line and is usually 5 or 10 chains away from the true corner.

Meander Corner: The intersection of a township, range, or section line and the banks of a navigable stream or meandering body of water.

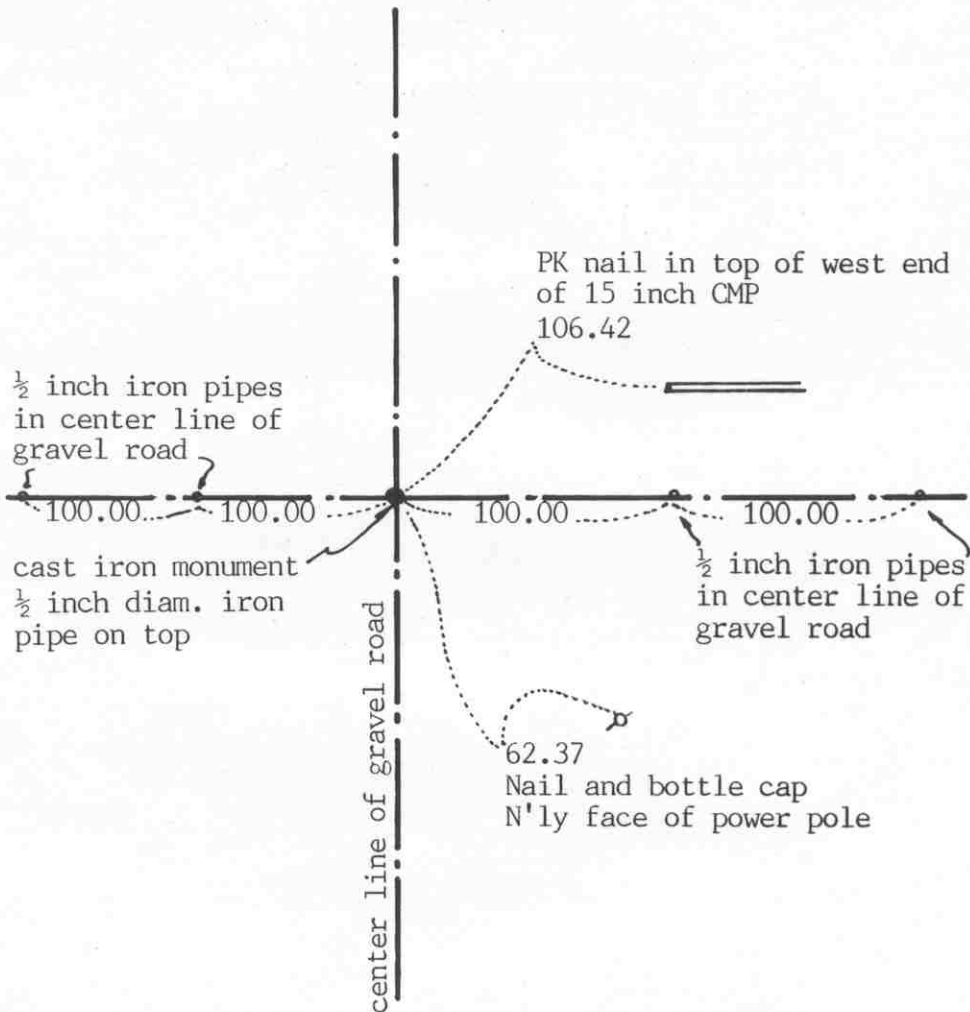
EAST QUARTER corner, Section 1, Township 117 North, Range 29 West

Certificate of Location of Government Corner

SKETCH OF REFERENCE TIES

(NO SCALE)

SECTION 1, T 117, R 29



SECTION 6, T 117, R 28

Statement of evidence relative to this corner location on sheet 2

I hereby certify that this document
was prepared by me or under my
direct supervision.

Willard Pellinen
Willard Pellinen
McLeod County Surveyor
License No. 9626

Date March 10, 1991

OFFICE OF THE COUNTY RECORDER
MCLEOD COUNTY, MINNESOTA.

I hereby certify that this document was filed in this
office at 2 o'clock P.M. on the 1st day
of April, 19 91.

Carmen Ostlie, County Recorder
By _____, Deputy

Document No. 238149

Certificate of Location of Government Corner

August, 1855. John Ryan of the General Land Office set a post and marked 2 bur oaks for bearing trees.

September 19, 1969. McCombs Knutson Associates (Dickman Knutson, county surveyor) measured the east line of Section 1 and set a temporary quarter corner at the center line intersection of the roads .

April 17, 1970. Knutson dug for the corner, John Tupa from Hutchinson with a backhoe. They found a rotted wood stake down 3 feet below the road surface.

Knutson set a cast iron monument. (date not known)

April 8, 1981. We found the monument in good condition and set $\frac{1}{2}$ inch diameter iron pipes 100.00 feet east and 100.00 feet west of the monument (in a straight line) for reference ties. Old ties to be destroyed by road construction.

June 18, 1986. We found the monument buried 3 feet below the road surface by road construction. Ties taken before road construction check ok. We set a 14 inch by $\frac{1}{2}$ inch diameter iron pipe over the monument and took new reference ties.

May 2, 1990. We found the iron pipe and the reference ties good.

We accept the wood stake found by Knutson as having perpetuated the correct location of the quarter corner.

NORTHEAST corner, Section 1, Township 117 North, Range 29 West

Certificate of Location of Government Corner

SKETCH OF REFERENCE TIES

(NO SCALE)

SEC. 36, T118, R29

SEC. 31, T118, R28

Nail and bottle cap in
NE face of post by tel.
ped.

36.45

39.39

field line

CIM

Chiseled + on top of each
end of 24 inch conc. culv.
54 feet long

South edge of sign post

24.83

$\frac{1}{2}$ inch iron
pipes on center
line of gravel road
(straight line)

44.88

center line of gravel road

SEC. 1, T117, R29

SEC. 6, T117, R28

Statement of evidence relative to this corner location on sheet 2

I hereby certify that this document
was prepared by me or under my
direct supervision.

Willard Pellinen

Willard Pellinen
McLeod County Surveyor
License No. 9626

Date March 10, 1991

OFFICE OF THE COUNTY RECORDER
MCLEOD COUNTY, MINNESOTA.

I hereby certify that this document was filed in this
office at 9 o'clock A.M. on the 26th day
of July, 1994.

CARMEN OSTLIE MILDORF, MCLEOD COUNTY RECORDER

, County Recorder

By Thyllis Hopewick, Deputy

Document No. 260933

NORTHEAST corner, Section 1, Township 117 North, Range 29 West

Certificate of Location of Government Corner

- August, 1855. John Ryan of the General Land Office set a post at the corner and marked 2 willows and 2 aspen for bearing trees.
1970. Oscar Anderson, 71 years old, has lived in the Southwest Quarter of Section 31, T118, R28 all his life, said 40 years ago when they rebuilt the road, an old "marker" was found and they put in an iron marker. He said it could be 4 or more feet down below the road surface.
- October 2, 1970. McCombs Knutson Associates (Dickman Knutson, county surveyor) dug for the corner, John Tupa from Hutchinson with a backhoe. Down 5½ feet below the road surface they found a 3 inch angle iron.
- October 13, 1970. Knutson set a McLeod County cast iron monument.
- May 8, 1981. We found the cast iron monument down 7 inches below the road surface in good condition. We set ½ inch iron pipes 100.00 and 200.00 feet east (on a straight line) for reference ties to replace the corner after road construction.
- June 18, 1986. We found the monument down 2½ feet below the road surface, in good condition and checked ok with the 1981 reference ties. We took additional reference ties. We set a ½ inch by 14 inch iron pipe over the monument, 3 inches below the road surface.
- May 2, 1990. We found the iron pipe and the reference ties good.
- We accept the angle iron found by Knutson as having perpetuated the correct location of the section corner.
- May 11, 1994. Jerry Uhde, Wright County Surveyor, set a cast iron monument, marked section corner, above the existing cast iron monument.

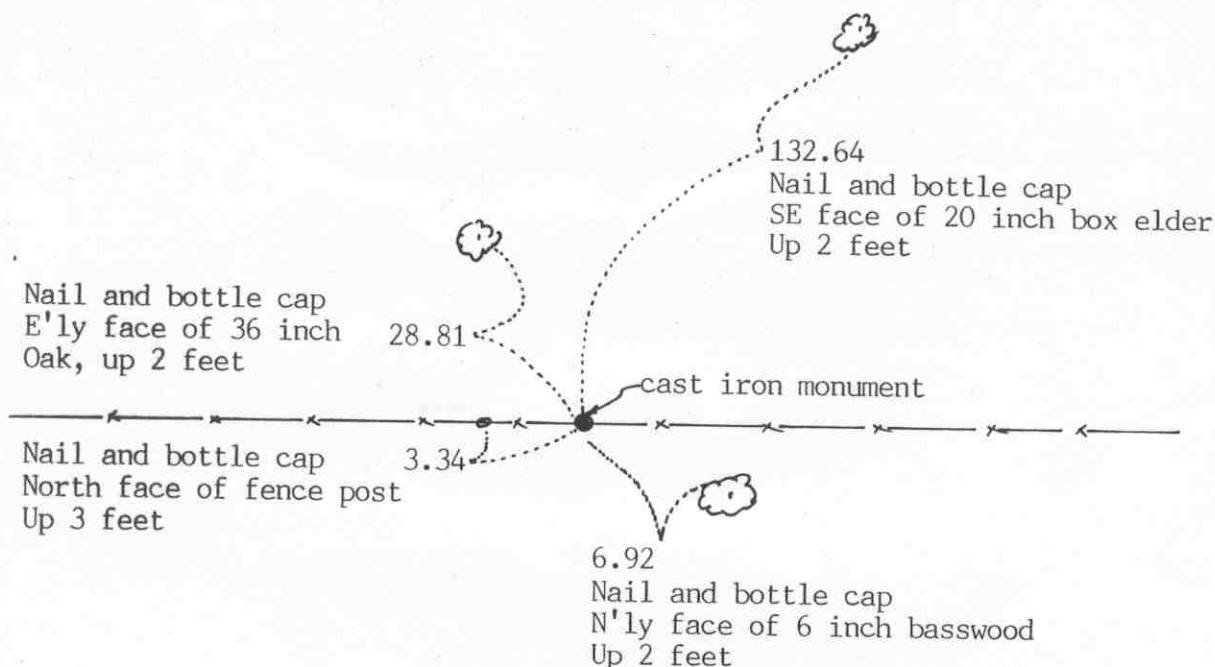
NORTH QUARTER corner, Section 1, Township 117 North, Range 29 West

Certificate of Location of Government Corner

SKETCH OF REFERENCE TIES

(NO SCALE)

SECTION 36 T 118 R 29



SECTION 1 T 117 R 29

Statement of evidence relative to this corner location on sheet 2

I hereby certify that this document was prepared by me or under my direct supervision.

Willard Pellinen

Willard Pellinen
McLeod County Surveyor
License No. 9626

Date April 13, 1991

OFFICE OF THE COUNTY RECORDER MCLEOD COUNTY, MINNESOTA.

I hereby certify that this document was filed in this office at 9 o'clock A. M. on the 19th day of April, 1991.

Carmen Gellie, County Recorder

By _____, Deputy

Document No. 238406

NORTH QUARTER corner, Section 1, Township 117 North, Range 29 West

Certificate of Location of Government Corner

August, 1855. John Ryan of the General Land Office set a post and marked an oak and an elm for bearing trees.

No record of the location of this corner in county files.

December 21, 1972. McCombs Knutson Associates (Dickman Knutson, county surveyor) chained the north line of Section 1 and set a temporary quarter corner. Lowell Falling, 46 years old, has lived in the southwest quarter of Section 36 for 14 years, testified that there is an iron at the corner along the east-west fence, in line with the southerly extension of a fence approximately a quarter mile north.

November 21, 1973. Knutson found a $\frac{1}{2}$ inch by $1\frac{1}{2}$ inch by 18 inch iron stake and replaced it with a McLeod County cast iron monument and took available reference ties. The corner falls approximately 5 feet east of a split between the section corners.

We accept the iron found by Knutson as having perpetuated the correct location of the quarter corner.

May 2, 1990. We found the monumet in good condition but no reference ties remaining. We took new available ties.

EAST QUARTER corner, Section 2, Township 117 North, Range 29 West

Certificate of Location of Government Corner

SKETCH OF REFERENCE TIES (NO SCALE)

SECTION 2

SECTION 1

Nail and disc
East face of power pole
95.00

Nail and disc
NE face of tel. pole
33.60

45.25

Punch hole on top of
each end of CMP

26.50

cast iron monument

center line of road

Statement of evidence relative to this corner location on sheet 2

I hereby certify that this document
was prepared by me or under my
direct supervision.

Willard Pellinen

Willard Pellinen
McLeod County Surveyor
License No. 9626

Date March 10, 1991

OFFICE OF THE COUNTY RECORDER
MCLEOD COUNTY, MINNESOTA.

I hereby certify that this document was filed in this
office at 2 o'clock P.M. on the 1st day
of April, 1991.

Armen Otthie, County Recorder

By _____, Deputy

Document No. 238151

EAST QUARTER corner, Section 2, Township 117 North, Range 29 West**Certificate of Location of Government Corner**

- May, 1856. A.H.Runyon of the General Land Office set a post and marked 2 linden trees for bearing trees.
- March 27, 1973. McCombs Knutson Associates (Dickman Knutson, county surveyor) measured the east line of Section 2 and set a temporary quarter corner on the center line of the north south road in line with a field line to the west and the center line of the road to the east.
- July 13, 1973. Knutson dug for the corner, John Tupa from Hutchinson with a backhoe. They found a stone and wood stake down 4 feet below the road surface. Stone was 6 inches in diameter about 16 inches long, set on end. Took reference ties and left stone in place.
- November 15, 1973. Knutson set a McLeod County cast iron monument and took additional reference ties.
- May 4, 1990. We found the monument in good condition and the reference ties good.

We accept the stone found by Knutson as having perpetuated the correct location of the quarter corner.

NORTHEAST corner, Section 2, Township 117 North, Range 29 West

Certificate of Location of Government Corner

SKETCH OF REFERENCE TIES

(NO SCALE)

SECTION 35, T118, R29

SECTION 36, T118, R29

Nail and bottle cap
SW face of power pole

46.70

20.40

Punch hole on top of
each end of culvert

27.66

27.65

Nail and bottle cap
South face of power pole

37.80

Punch hole on top of
north end of CMP

C.I.M.

SECTION 2, T117, R29

SECTION 1, T117, R29

Statement of evidence relative to this corner location on sheet 2

I hereby certify that this document
was prepared by me or under my
direct supervision.

Willard Pellinen

Willard Pellinen
McLeod County Surveyor
License No. 9626

Date March 28, 1991

OFFICE OF THE COUNTY RECORDER MCLEOD COUNTY, MINNESOTA.

I hereby certify that this document was filed in this
office at 2 o'clock P.M. on the 1st day
of April, 1991.

Carmen Oetli, County Recorder

By _____, Deputy

Document No. 238150

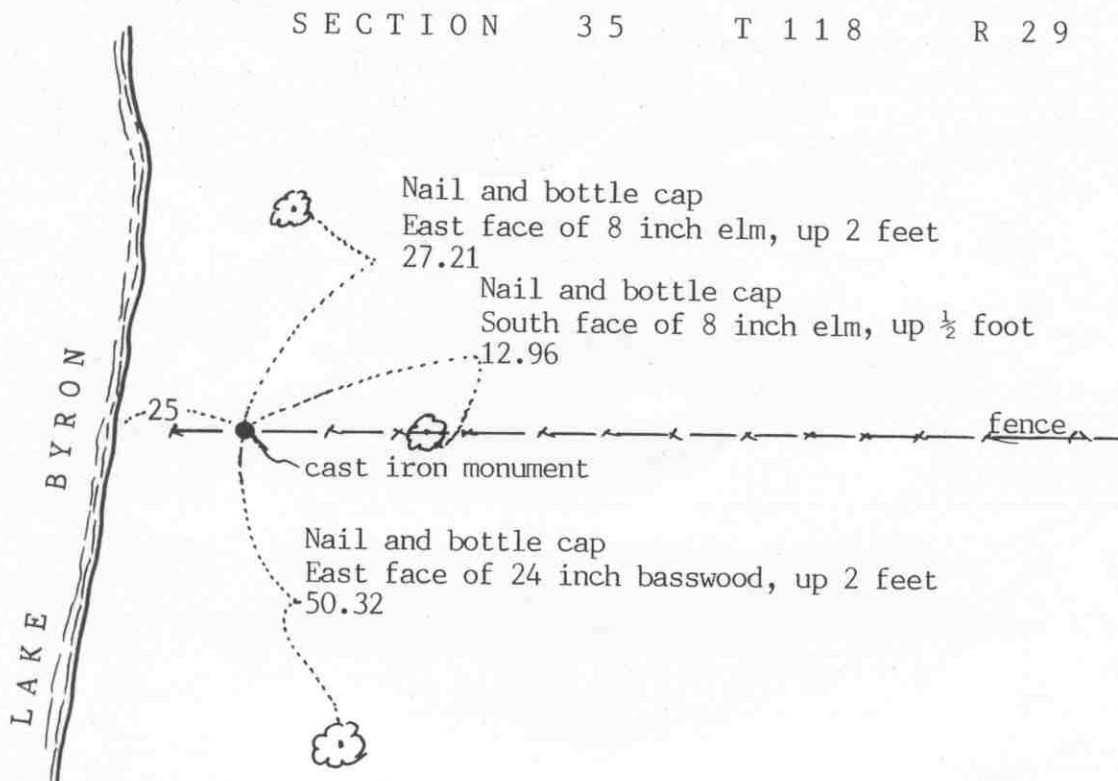
NORTHEAST corner, Section 2, Township 117 North, Range 29 West***Certificate of Location of Government Corner***

- August, 1855. John Ryan of the General Land Office set a post and marked 3 oaks and an elm for bearing trees.
- May 4, 1937. E.L.Higgins, county surveyor, found a stone, point up, at the corner. This was set by John Dean, former county surveyor.
- December 21, 1972. McCombs Knutson Associates, (Dickman Knutson, county surveyor) found a half inch diameter iron pipe. They took available ties.
- July 13, 1973. Knutson dug for the corner, John Tupa from Hutchinson with a back hoe. They dug a hole 8 feet by 8 feet by 5 feet deep but found nothing .
- August 21, 1973. Knutson set a McLeod County cast iron monument at the location of the iron pipe found in December, 1972.
- May 2, 1990. We found the monument in good condition and the reference ties good.

M.C. No. 44 corner, Section 2, Township 117 North, Range 29 West

Certificate of Location of Government Corner

SKETCH OF REFERENCE TIES (NO SCALE)



SECTION 35 T 118 R 29

SECTION 2 T 117 R 29

Statement of evidence relative to this corner location on sheet 2

I hereby certify that this document was prepared by me or under my direct supervision.

Willard Pellinen

Willard Pellinen
McLeod County Surveyor
License No. 9626

Date April 13, 1991

OFFICE OF THE COUNTY RECORDER MCLEOD COUNTY, MINNESOTA.

I hereby certify that this document was filed in this office at 9 o'clock A.M. on the 19th day of April, 1991.

Carmen O'Brien, County Recorder

By _____, Deputy

Document No. 238408

Certificate of Location of Government Corner

August, 1855. John Ryan of the General Land Office set a post at the meander corner and marked 2 iron-wood trees for bearing trees.

December 21, 1972. McCombs Knutson Associates (Dickman Knutson, county surveyor) chained the north line of Section 2 and set a temporary witness corner on the west shore of Lake Byron.

August 21, 1973. Knutson dug for the meander corner at the approximate government distance from the north-east corner of the section. They found a 1 inch diameter iron pin. This was 1784.3 feet west of the north-east corner of the section compared with 1782 feet by the government. Knutson had a total distance along the north line of Section 2 of 5284.8 feet compared with the government distance of 5280.0 feet. Knutson replaced the iron pin with a McLeod County cast iron monument and took available reference ties.

May 2, 1990. We found the monument in good condition but all the reference ties destroyed. We took new ties.

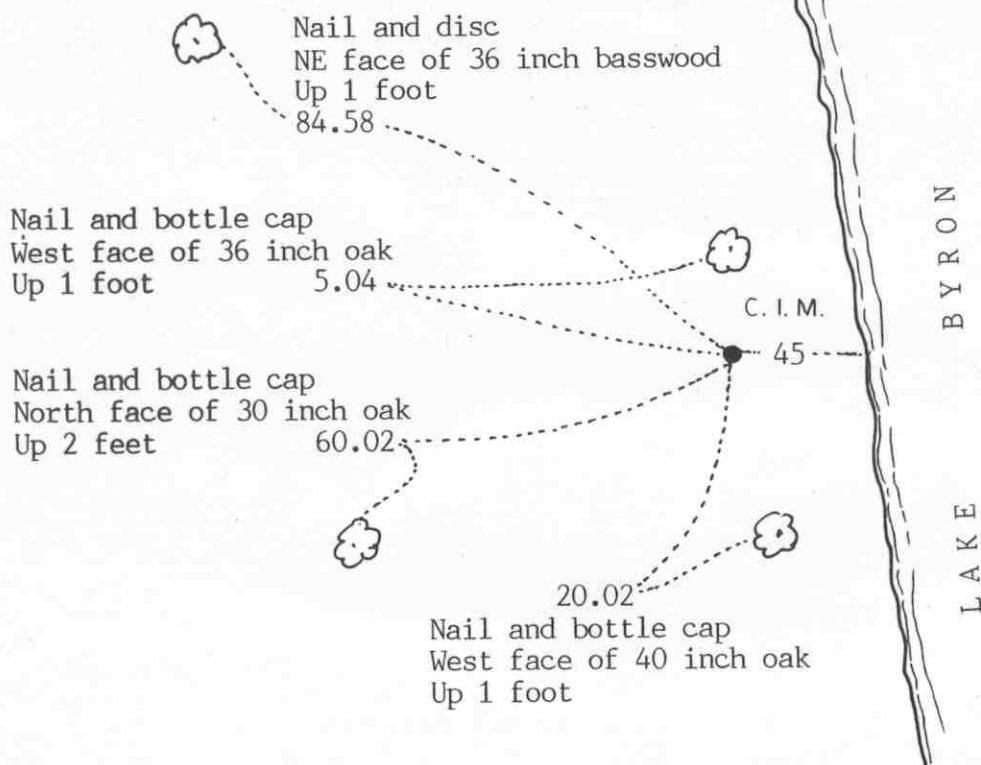
We accept the iron pin found by Knutson as having perpetuated the correct location of the meander corner.

Witness corner corner, Section 2, Township 117 North, Range 29 West

Certificate of Location of Government Corner

SKETCH OF REFERENCE TIES (NO SCALE)

SECTION 35 T 118 R 29



SECTION 2 T 117 R 29

Statement of evidence relative to this corner location on sheet 2

I hereby certify that this document
was prepared by me or under my
direct supervision.

Willard Pellinen

Willard Pellinen
McLeod County Surveyor
License No. 9626

Date April 13, 1991

OFFICE OF THE COUNTY RECORDER MCLEOD COUNTY, MINNESOTA.

I hereby certify that this document was filed in this
office at 9 o'clock A.M. on the 19th day
of April, 1991.

Armen Obelie, County Recorder
By _____, Deputy

Document No. 238407

Witness corner corner, Section 2, Township 117 North, Range 29 West

Certificate of Location of Government Corner

Point on north line of Section 2, west of Lake Byron.

Government meander corner No. 43 computes to about 26 feet east of found iron pin.

August 1855. The north line of Section 2 was run by the government.

December 21, 1972. McCombs Knutson Associates (Dickman Knutson, county surveyor) measured the north line of Section 2 and found a 1 inch diameter iron pin.

August 7, 1973. Knutson replaced the iron pin with a McLeod County cast iron monument and took reference ties.

May 4, 1990. We found the monument in good condition but all the reference ties gone. We took new ties.

East quarter corner, Section 3, Township 117 North, Range 29 West

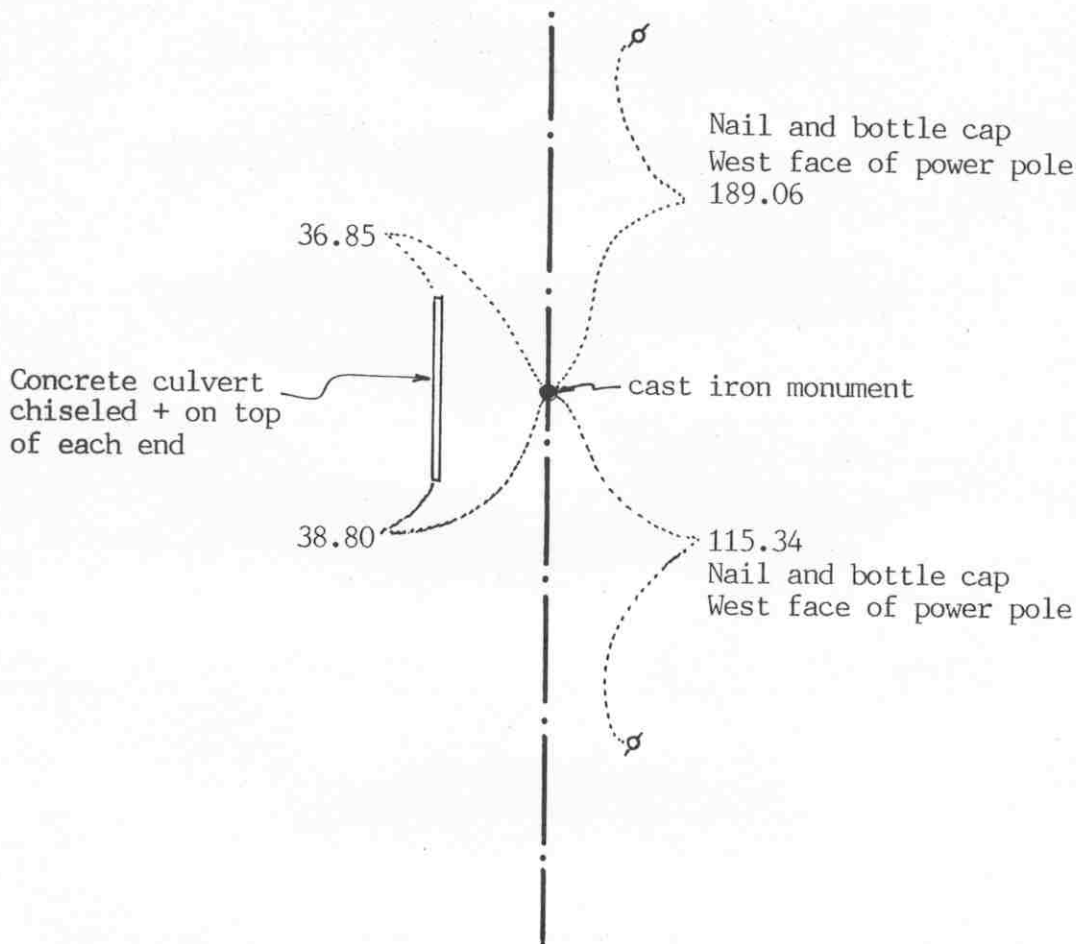
Certificate of Location of Government Corner

SKETCH OF REFERENCE TIES

(NO SCALE)



SECTION 3



SECTION 2

Statement of evidence relative to this corner location on sheet 2

I hereby certify that this document was prepared by me or under my direct supervision.

Willard Pellinen

Willard Pellinen
McLeod County Surveyor
License No. 9626

Date Feb. 11, 1991

OFFICE OF THE COUNTY RECORDER
MCLEOD COUNTY, MINNESOTA.

I hereby certify that this document was filed in this office at 9 o'clock A.M. on the 20th day of Feb, 1991.

Carmen O'Brien, County Recorder

By _____, Deputy

Document No. 237615

East quarter corner, Section 3, Township 117 North, Range 29 West

Certificate of Location of Government Corner

This corner was originally established by the General Land Office in May, 1856. A.H.Runyon set a post and marked 1 aspen and 1 bur oak as bearing trees.

January 3, 1975. McCombs Knutson Associates (Dickman Knutson, county surveyor) measured the east line of Section 3 and set a temporary corner at old distances by the county highway department from the section corners. No occupation lines to help position this corner.

June 5, 1975. Knutson dug for the corner, John Tupa from Hutchinson with a backhoe. Down 5 feet below the road surface they found a 4 inch by 6 inch stone, placed on end. This was within a few feet of the old distances by the county highway department.

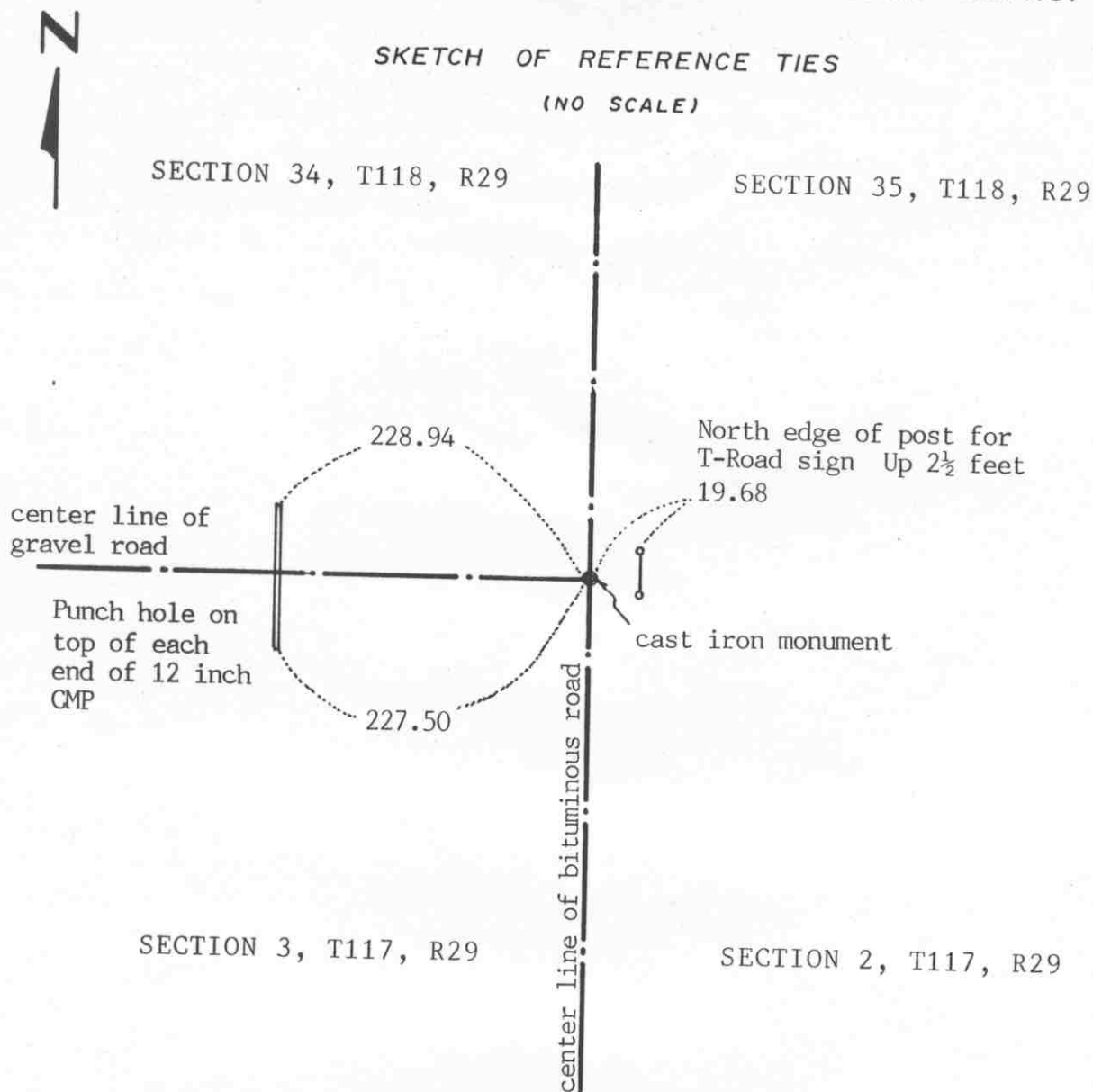
July 22, 1975. Knutson set a McLeod County cast iron monument at the corner and took reference ties.

May 1, 1990. We found the monument in good condition and the reference ties good.

We accept the stone found by Knutson as having perpetuated the correct location of the quarter corner.

NORTHEAST corner, Section 3, Township 117 North, Range 29 West

Certificate of Location of Government Corner

SKETCH OF REFERENCE TIES
(NO SCALE)Statement of evidence relative to this corner location on sheet 2

I hereby certify that this document was prepared by me or under my direct supervision.

Willard Pellinen

Willard Pellinen
McLeod County Surveyor
License No. 9626

Date Feb. 11, 1991

OFFICE OF THE COUNTY RECORDER
MCLEOD COUNTY, MINNESOTA.

I hereby certify that this document was filed in this office at 9 o'clock A.M. on the 20th day of Feb, 1991.

Carmen Helie, County Recorder

By _____, Deputy

Document No. 237614

Northeast corner, Section 3, Township 117 North, Range 29 West**Certificate of Location of Government Corner**

August, 1855. The Public Land Survey was run by John Ryan who set a post and marked 4 trees for bearing trees.

19 . McLeod County Highway Department field notes show they set an iron pin at an assumed corner.

December 21, 1972. McCombs Knutson Associates (Dickman Knutson, county surveyor) measured the north line of Sections 2 and 3 and found a spike at the northeast corner of Section 3.

May 31, 1973. Knutson found an iron pin at the corner, below the spike found in 1972. This point has been accepted by adjoining land owners as being the section corner.

August 7, 1973. Knutson replaced the iron pin with a McLeod County cast iron monument and took reference ties.

April 30, 1990. We found the monument in good condition down 4 inches below the surface of the bituminous road. We took new reference ties.

North quarter corner, Section 3, Township 117 North, Range 29 West

Certificate of Location of Government Corner

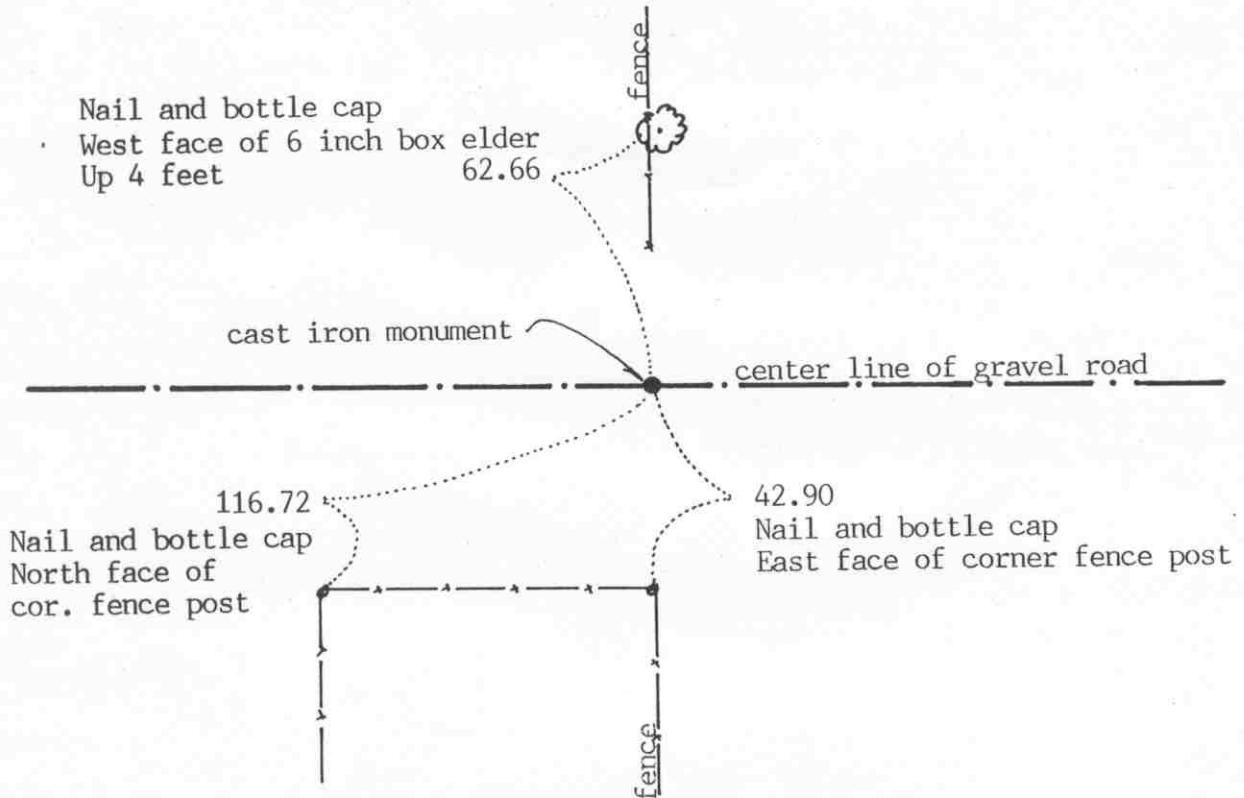


SKETCH OF REFERENCE TIES

(NO SCALE)

SECTION 34

T. 118, R. 29



SECTION 3

T. 117, R. 29

Statement of evidence relative to this corner location on sheet 2

I hereby certify that this document was prepared by me or under my direct supervision.

Willard Pellinen

Willard Pellinen
McLeod County Surveyor
License No. 9626

Date February 12, 1991

OFFICE OF THE COUNTY RECORDER
MCLEOD COUNTY, MINNESOTA.

I hereby certify that this document was filed in this office at 9 o'clock A.M. on the 20th day of Feb, 1991.

Carmen Bellie, County Recorder

By _____, Deputy

Document No. 237616

North quarter corner, Section 3, Township 117 North, Range 29 West***Certificate of Location of Government Corner***

August, 1855. The Public Land Survey was run by John Ryan who set a post in a marsh and marked an aspen and an elm for bearing trees.

January 4, 1973. Arnold Ulrich, 55 years old, who has lived in the Southwest Quarter of Section 34, Township 118, Range 29, for 24 years, says the fences running north and south have been there as long as he can remember and should be on the quarter lines and the road should be the section line. He also owns the Northeast Quarter of the Northwest Quarter of Section 3. Mr. Lundeen, 58 years old, in the Northeast Quarter of Section for 25 years, agrees with Mr. Ulrich. Mr. Rudolph Linder, 69 years old, has lived in the Southeast Quarter of Section 34 all his life, also stated the fences have been there as long as he can remember and should be on the quarter lines.

December 21, 1972. McCombs Knutson Associates (Dickman Knutson, county surveyor) measured the north line of the section and set a temporary quarter corner on the center line of the east west road in line with the fences north and south.

July 13, 1973. Knutson dug for the corner, John Tupa from Hutchinson with a backhoe. They dug a hole 8 feet by 8 feet by 6 feet deep but found nothing.

August 7, 1993. Knutson set a McLeod County cast iron monument on the center line of the road in line with the fences and took reference ties.

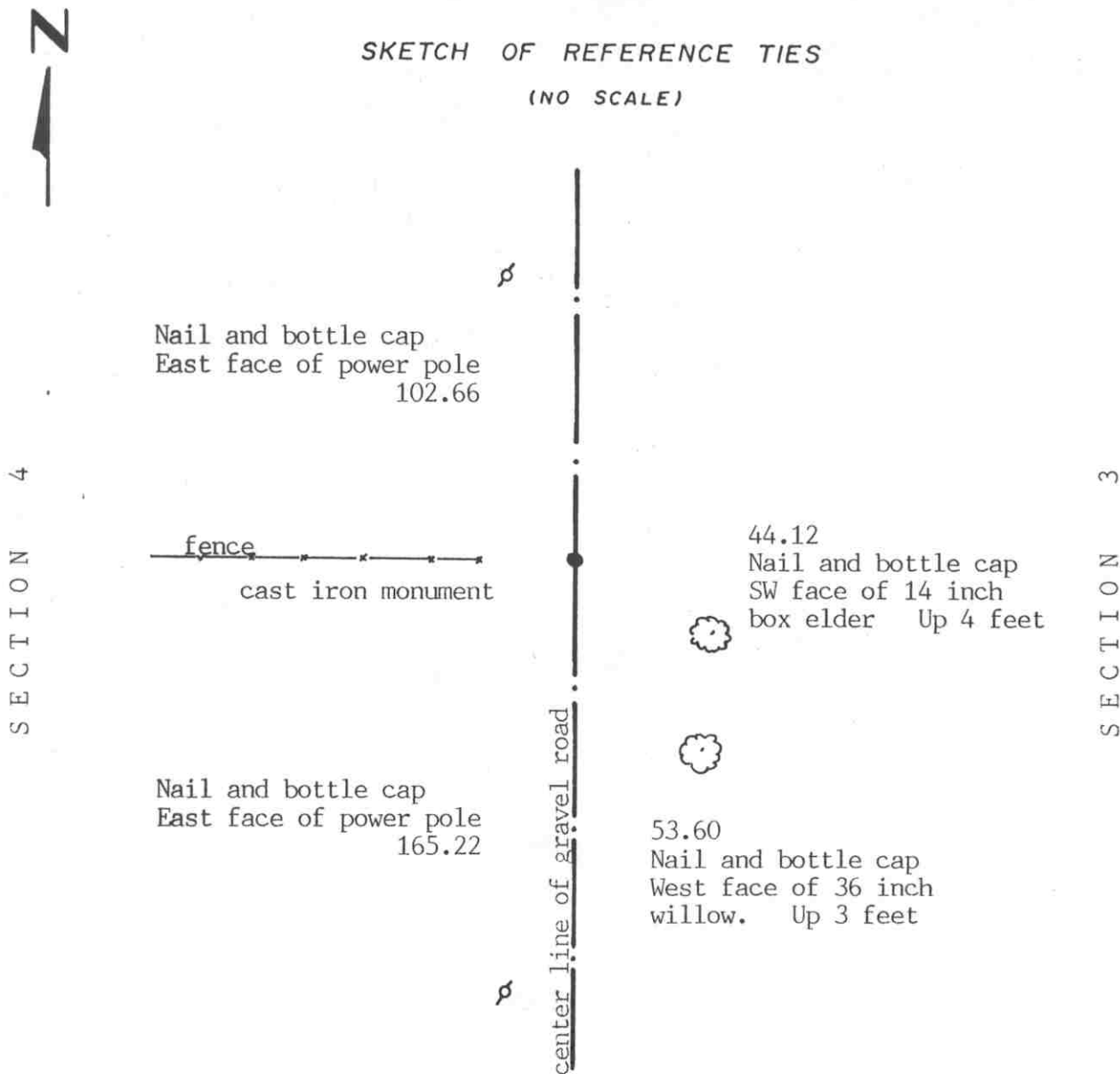
April 30, 1990. We found all the reference ties gone but found the monument in good condition down 6 inches below the road surface. We took new reference ties.

East quarter corner, Section 4, Township 117 North, Range 29 West

Certificate of Location of Government Corner

SKETCH OF REFERENCE TIES

(NO SCALE)



Statement of evidence relative to this corner location on sheet 2

I hereby certify that this document was prepared by me or under my direct supervision.

Willard Pellinen
Willard Pellinen
McLeod County Surveyor
License No. 9626

Date March 9, 1991

OFFICE OF THE COUNTY RECORDER
MCLEOD COUNTY, MINNESOTA.

I hereby certify that this document was filed in this office at 2 o'clock P.M. on the 1st day of April, 19 91.

Armen Botchie, County Recorder

By _____, Deputy

Document No. 238152

East quarter corner, Section 4, Township 117 North, Range 29 West

Certificate of Location of Government Corner

This corner was originally set by the government in May, 1856. A.H.Runyon set a post and marked 2 aspens for bearing trees.

June 5, 1975. McCombs Knutson Associates (Dickman Knutson, county surveyor) dug for the corner, John Tupa from Hutchinson with a backhoe. They found a 15 inch diameter stone with a wood stake beside the stone. This was with a few feet of being on the proration of government distances to the northeast and southeast corners of Section 4.

July 22, 1975. Knutson set a McLeod County cast iron monument.

May 1, 1990. We found no reference ties remaining to the corner. We found the cast iron monument down 8 inches below the road surface in good condition and took new reference ties.

We accept the stone found by Knutson as having perpetuated the correct location of the quarter corner. This was in the center line of the north-south gravel road in line with a fence to the west.

NORTHEAST

corner, Section 4, Township 117 North, Range 29 West

Certificate of Location of Government Corner

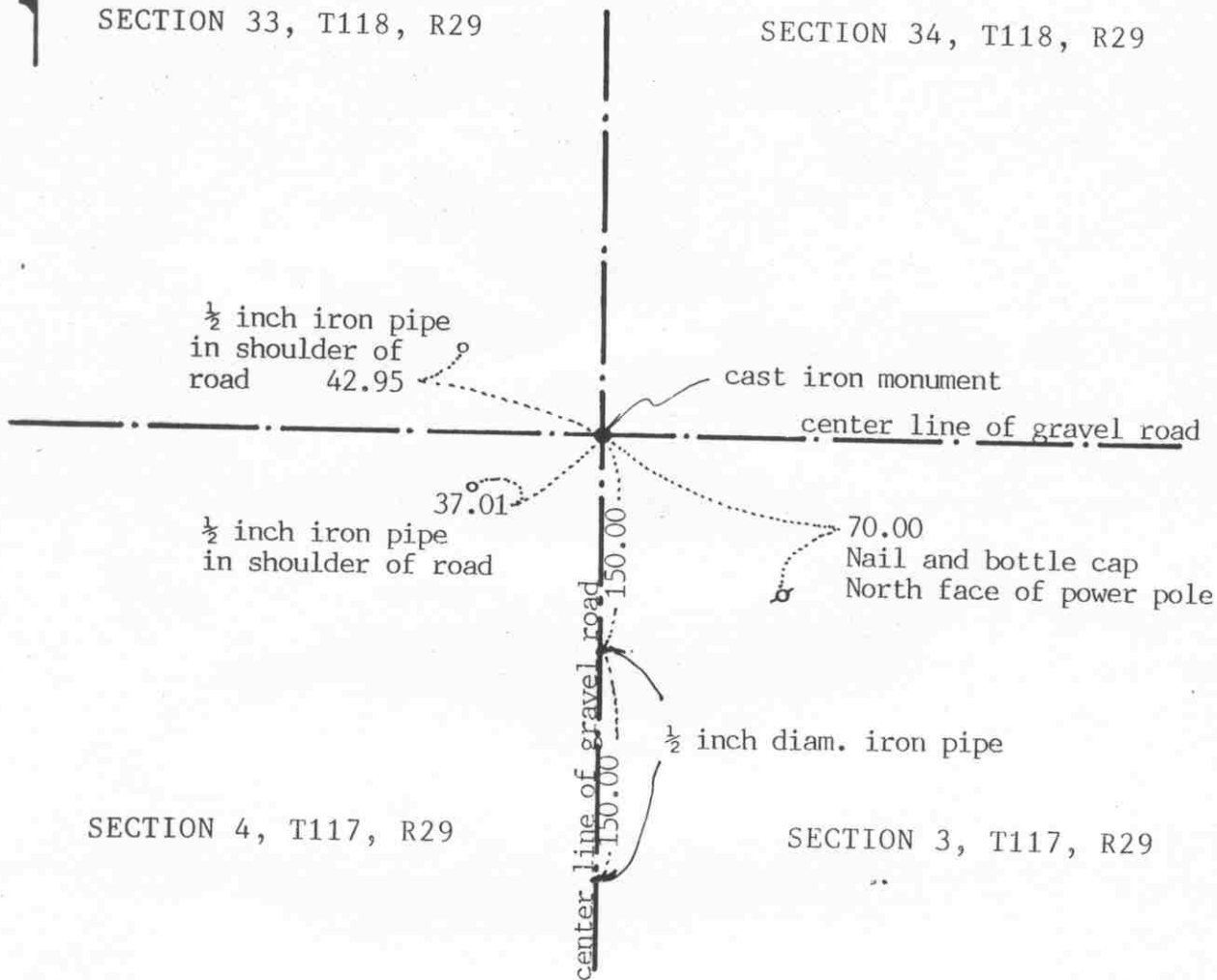
SKETCH OF REFERENCE TIES

(NO SCALE)



SECTION 33, T118, R29

SECTION 34, T118, R29



Statement of evidence relative to this corner location on sheet 2

I hereby certify that this document was prepared by me or under my direct supervision.

Willard Pellinen
Willard Pellinen
McLeod County Surveyor
License No. 9626

Date February 15, 1991

OFFICE OF THE COUNTY RECORDER
MCLEOD COUNTY, MINNESOTA.

I hereby certify that this document was filed in this office at 9 o'clock A.M. on the 20th day of Feb, 1991.

Carmen Utlie, County Recorder

By _____, Deputy

Document No. 237617

Northeast corner, Section 4, Township 117 North, Range 29 West

Certificate of Location of Government Corner

August, 1855. John Ryan of the General Land Office originally set a post at the corner and marked 3 oaks and 1 aspen for bearing trees.

April 7, 1914. Field notes by Lew Merrill, surveyor, show an iron stake at the corner.

December 21, 1972. McCombs Knutson Associates measured the north line of Sections 3 and 4 and found a spike at the corner. This was on the center line intersection of roads.

January 4, 1973. Mr. Oscar Schuman, who has lived in the Southwest Quarter of Section 34 for 66 years, said there is an iron monument at the corner. Road was rebuilt about 40 years ago and iron monument was found at that time.

August 7, 1973. Knutson found a railroad spike below the spike found in December and a 10 inch by 12 inch stone, top painted red, below the railroad spike. Below the stone they found a square iron monument, $2\frac{1}{2}$ inches by $2\frac{1}{2}$ inches square on top. This was down 2 feet below the surface of the road. Knutson set a McLeod County cast iron monument over the found monument and took reference ties.

April 30, 1990. We found the monument in good condition and took new reference ties. The monument was 5 inches below the surface of the road.

June 18, 1990. We set 2 iron pipes south of the monument, one 150.00 feet and the other 300.00 feet south, in line with the monument and the east quarter corner of Section 4. Road will be rebuilt and the other reference ties will probably be destroyed.

We believe the monument found by Knutson is the same monument used by Lew Merrill in 1914 and that it has perpetuated the correct location of the section corner.

North quarter corner, Section 4, Township 117 North, Range 29 West

Certificate of Location of Government Corner



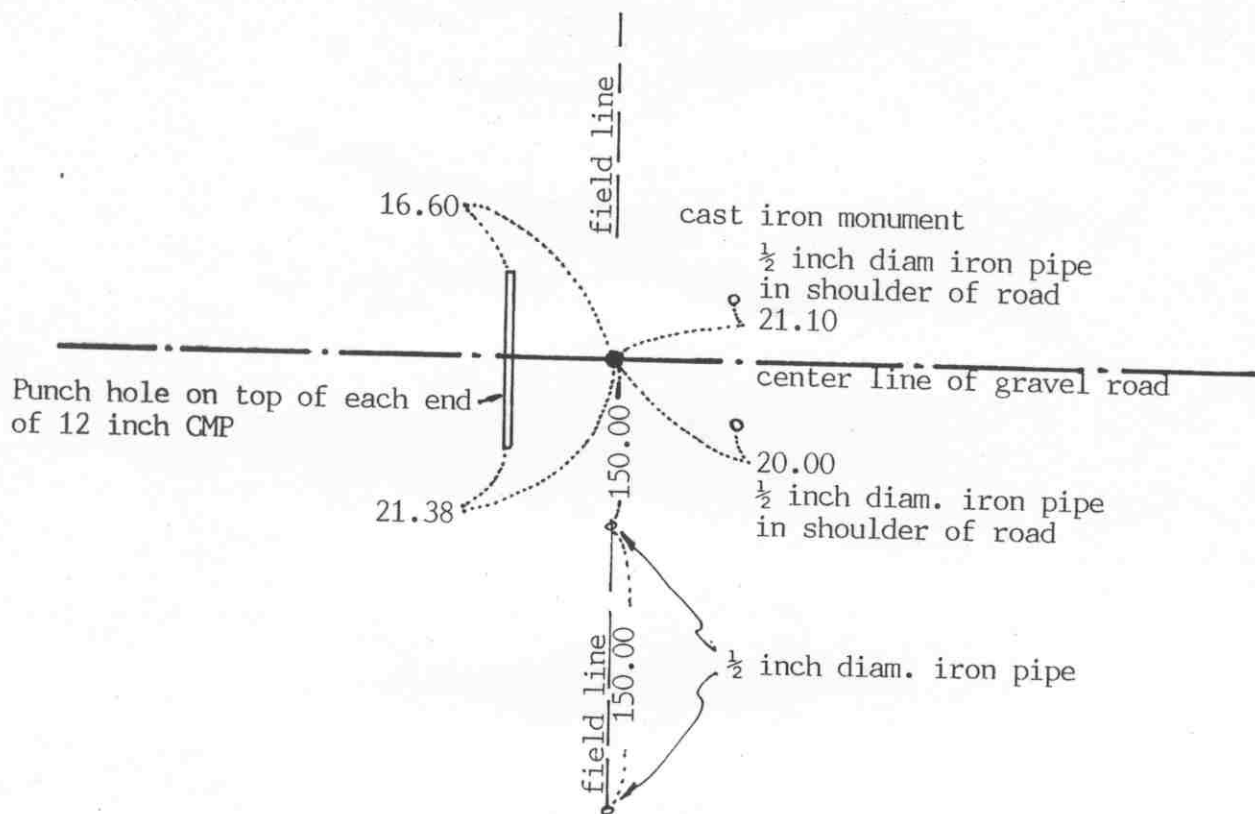
SKETCH OF REFERENCE TIES

(NO SCALE)

SECTION 33

T 118

R 29



SECTION 4

T 117

R 29

Statement of evidence relative to this corner location on sheet 2

I hereby certify that this document was prepared by me or under my direct supervision.

Willard Pellinen

Willard Pellinen
McLeod County Surveyor
License No. 9626

Date Feb. 15, 1991

OFFICE OF THE COUNTY RECORDER
MCLEOD COUNTY, MINNESOTA.

I hereby certify that this document was filed in this office at 9 o'clock A.M. on the 20th day of Feb, 1991.

Carmen O'Brien, County Recorder
By _____, Deputy

Document No. 237618

North quarter corner, Section 4, Township 117 North, Range 29 West

Certificate of Location of Government Corner

This corner was originally established by the government in August, 1855. John Ryan set a post and marked an ash and an oak for bearing trees.

April 17, 1914. Lew Merrill, surveyor, found an iron pipe at the corner.

December 21, 1972. McCombs Knutson Associates (Dickman Knutson, county surveyor) found an iron pipe at the corner. This was in the center line of the east-west road in line with field lines north and south.

February 15, 1973. Delbert Rotzien, 64 years old, who has lived in the Northeast Quarter of Section 4 since 1940, stated surveyors found a metal marker at the quarter corner in the center line of the road in line with the field lines.

August 7, 1973. Knutson replaced the found iron pipe with a McLeod County cast iron monument and took reference ties. This is within a few feet of 1914 distances to the northeast and northwest corners of Section 4.

April 30, 1990. We found the monument in good condition 6 inches below the surface of the road and we took new reference ties.

June 18, 1990. We set 2 iron pipes south of the monument. One 150.00 feet and the other 300.00 feet south, all in a straight line. Some of the older reference ties will probably be destroyed by road construction.

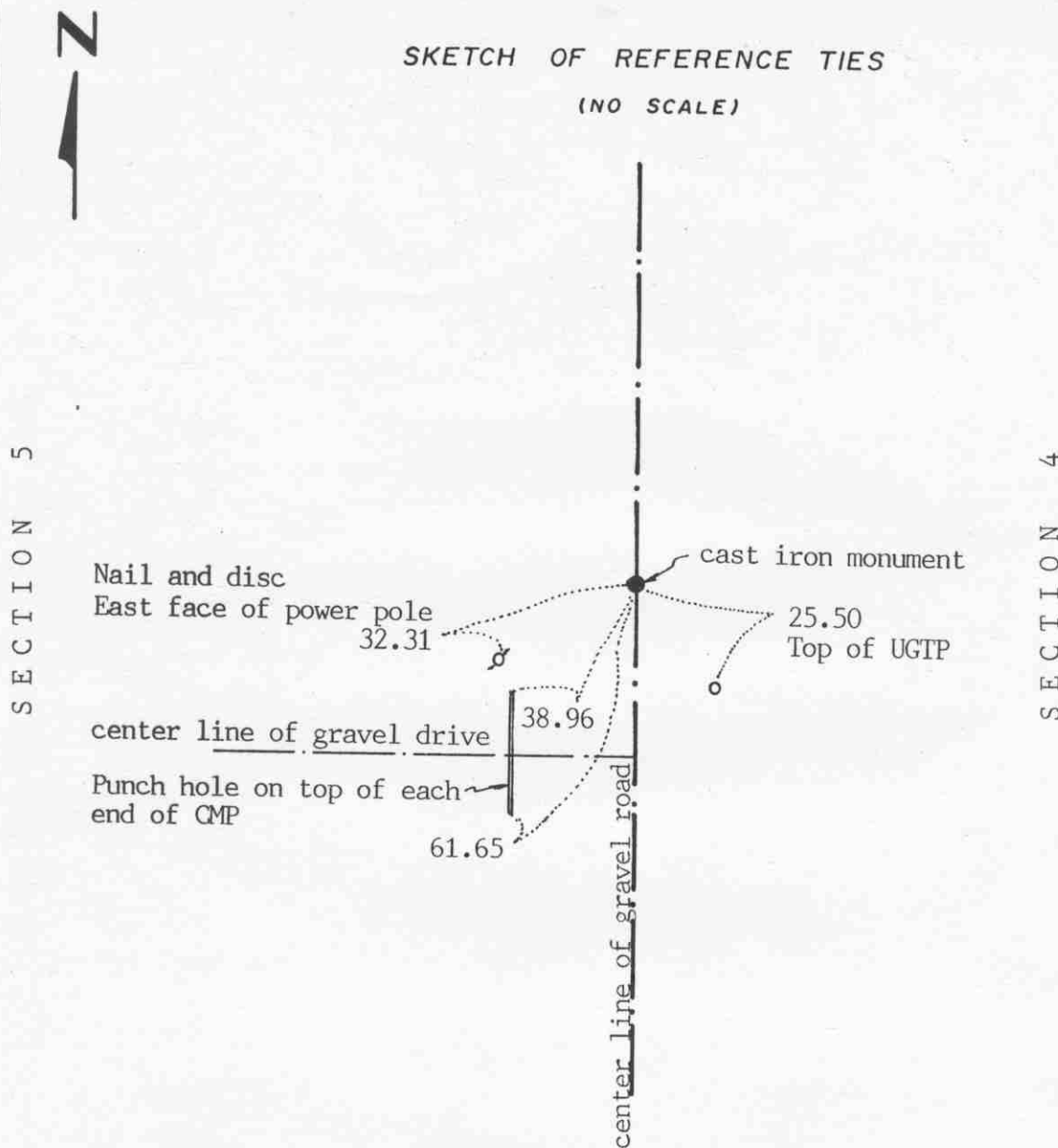
We believe the iron pipe found by Knutson is the same one used by Lew Merrill in 1914 and that it had perpetuated the correct location of the quarter corner.

East Quarter corner, Section 5, Township 117 North, Range 29 West

Certificate of Location of Government Corner

SKETCH OF REFERENCE TIES

(NO SCALE)

Statement of evidence relative to this corner location on sheet 2

I hereby certify that this document
was prepared by me or under my
direct supervision.

Willard Pellinen
Willard Pellinen
McLeod County Surveyor
License No. 9626

Date Feb. 13, 1991

OFFICE OF THE COUNTY RECORDER
MCLEOD COUNTY, MINNESOTA.

I hereby certify that this document was filed in this
office at 9 o'clock A.M. on the 20th day
of Feb, 1991.

Carmen Oetlie, County Recorder

By _____, Deputy

Document No. 237620

East Quarter corner, Section 5, Township 117 North, Range 29 West

Certificate of Location of Government Corner

This corner was originally set by the government in May, 1856. A.H.Runyon set a post in a marsh and marked an aspen and a walnut tree for bearing trees.

January, 1975. McCombs Knutson Associates (Dickman Knutson, county surveyor) measured the east line of Section 5 and set a temporary quarter corner.

June 5, 1975. Knutson dug for the corner, John Tupa from Hutchinson with a backhoe. They dug a hole 5 feet by 16 feet long by 5 feet deep but found nothing. This is a swampy area on each side of the road and the ground below the road bed was soft, wet black dirt. No information on this corner and no occupation lines to help restore the corner.

October 14, 1975. Knutson set a McLeod County cast iron monument on line and on a proration of the government distances between the section corners.

May 1, 1990. We found the monument in good condition and the reference ties good.

There being no evidence to the contrary, we accept the cast iron monument set by Knutson as marking the correct location of the quarter corner.

NORTHEAST corner, Section 5, Township 117 North, Range 29 West

Certificate of Location of Government Corner

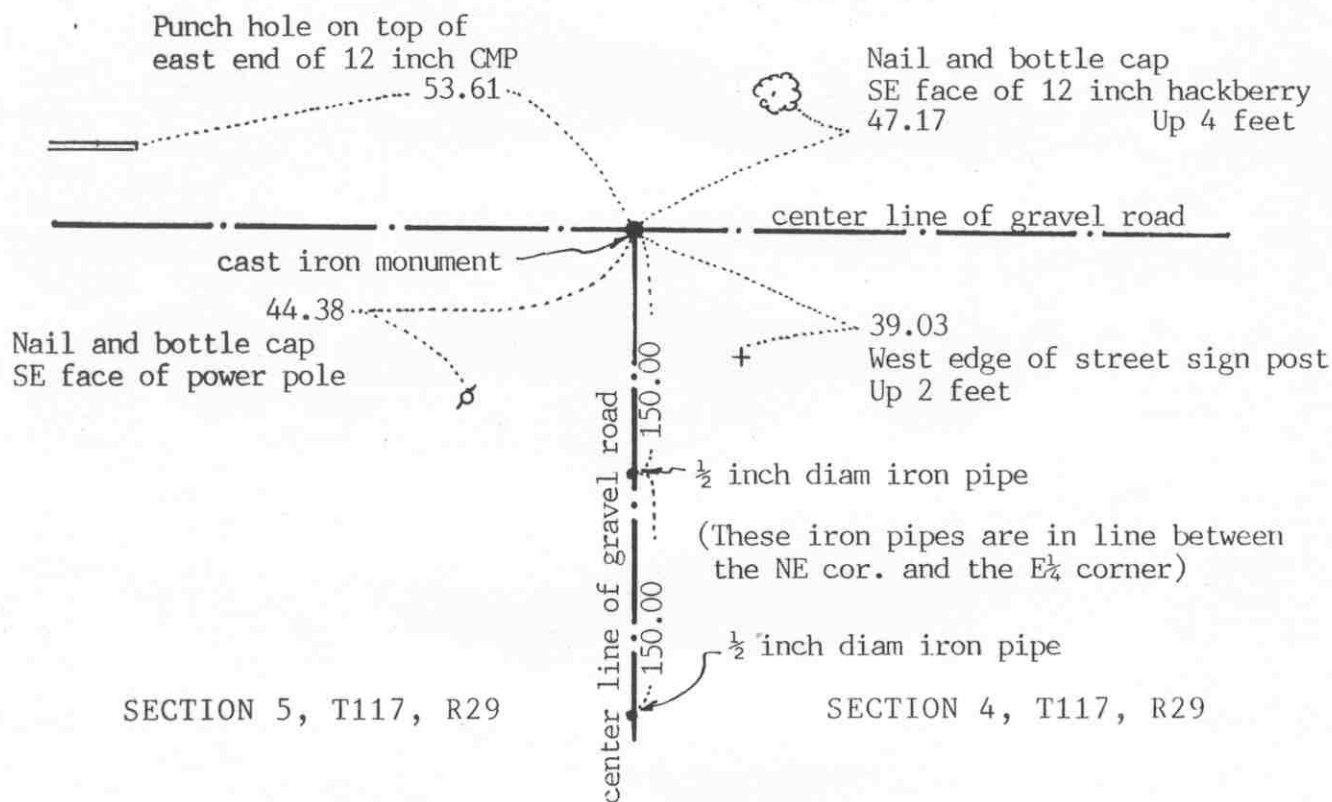
SKETCH OF REFERENCE TIES

(NO SCALE)



SECTION 32, T118, R29

SECTION 33, T118, R29



Statement of evidence relative to this corner location on sheet 2

I hereby certify that this document was prepared by me or under my direct supervision.

Willard Pellinen

Willard Pellinen
McLeod County Surveyor
License No. 9626

Date February 14, 1991

OFFICE OF THE COUNTY RECORDER
MCLEOD COUNTY, MINNESOTA.

I hereby certify that this document was filed in this office at 9 o'clock A.M. on the 20th day of Feb, 1991.

Carmen Ostlie, County Recorder

By _____, Deputy

Document No. 237619

Northeast corner, Section 5, Township 117 North, Range 29 West

Certificate of Location of Government Corner

This corner was established by the government in August, 1855. John Ryan set a post and marked 4 trees for bearing trees.

1914. Lew Merrill, surveyor, found an iron monument at the corner.

December 20, 1972. McCombs Knutson Associates (Dickman Knutson, county surveyor) measured the north line of Sections 4 and 5 and set a temporary section corner at the center line intersection of the gravel roads.

February 15, 1973. Mr. Louis Rotzien, 80 years old, who has lived in the Southeast Quarter of Section 32 for 50 years, stated there is a metal "marker" at the corner at the center line intersection.

July 13, 1973. Knutson dug for the corner, John Tupa from Hutchinson with a backhoe. They found a 6 inch diameter stone, painted red on top with a black + . They found an iron monument below the stone, 2½ inches square on top. Took reference ties and removed the monument to make room for a McLeod County cast iron monument. They found a stone, 18 inches by 6 inches beside the monument.

August 7, 1973. Knutson set a cast iron monument.

May 1, 1990. We found the monument in good condition and took new reference ties.

June 18, 1990. We set additional ties, 2 iron pipes south of the corner. One pipe 150.00 feet south and the other 300.00 feet south, in line with the northeast corner and the east quarter corner of Section 5.

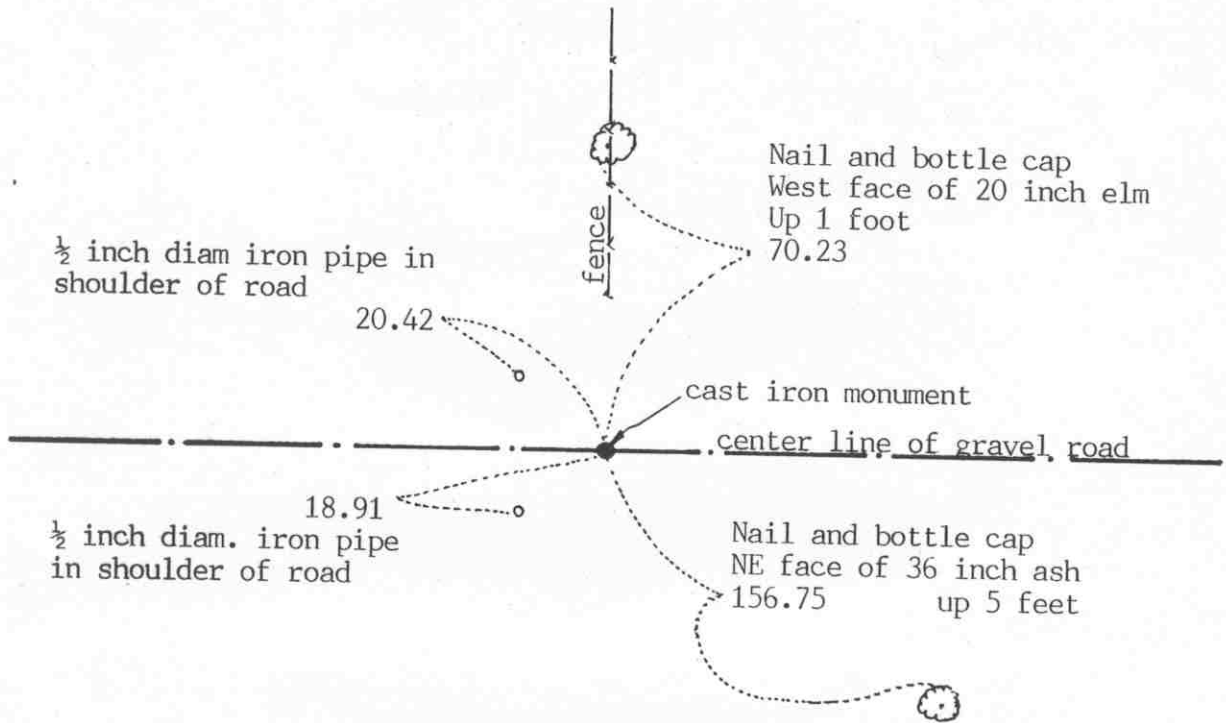
We believe the monument found by Knutson is the same monument found by Lew Merrill in 1914 and that it had perpetuated the correct location of the section corner.

North quarter corner, Section 5, Township 117 North, Range 29 West

Certificate of Location of Government Corner

SKETCH OF REFERENCE TIES
(NO SCALE)

SECTION 32, T118, R29



SECTION 5, T117, R29

Statement of evidence relative to this corner location on sheet 2

I hereby certify that this document was prepared by me or under my direct supervision.

Willard Pellinen
Willard Pellinen
McLeod County Surveyor
License No. 9626

Date February 14, 1991

OFFICE OF THE COUNTY RECORDER
MCLEOD COUNTY, MINNESOTA.

I hereby certify that this document was filed in this office at 9 o'clock A.M. on the 20th day of Feb, 1991.

Carmen O'Brien, County Recorder

By _____, Deputy

Document No. 237621

North quarter corner, Section 5, Township 117 North, Range 29 West

Certificate of Location of Government Corner

This corner was originally set by the government in August, 1855. John Ryan set a post and marked 2 aspens for bearing trees.

1914. Lew Merrill, surveyor, found an iron monument at the corner.

December 29, 1972. McCombs Knutson Associates (Dickman Knutson, county surveyor) measured the north line of Section 5 and set a temporary corner on the center line of the east-west road in line with a fence to the north.

July 13, 1973. Knutson dug for the corner, John Tupa from Hutchinson with a backhoe. Down 2 feet below the road surface they found a $\frac{1}{2}$ inch by 6 inch iron pin. They took reference ties and dug a hole 8 feet by 5 feet by 5 feet deep but found nothing else. This was within a foot of 1914 distance by Merrill to the northeast corner of Section 5.

August 7, 1973. Knutson set a McLeod County cast iron monument at the corner.

May 1, 1990. We found no reference ties remaining. We found the monument in good condition down 6 inches below the road surface and took new reference ties.

We believe the iron pin found by Knutson is the same iron monument found by Lew Merrill in 1914 and that it had perpetuated the correct location of the quarter corner.

EAST QUARTER corner, Section 6, Township 117 North, Range 29 West

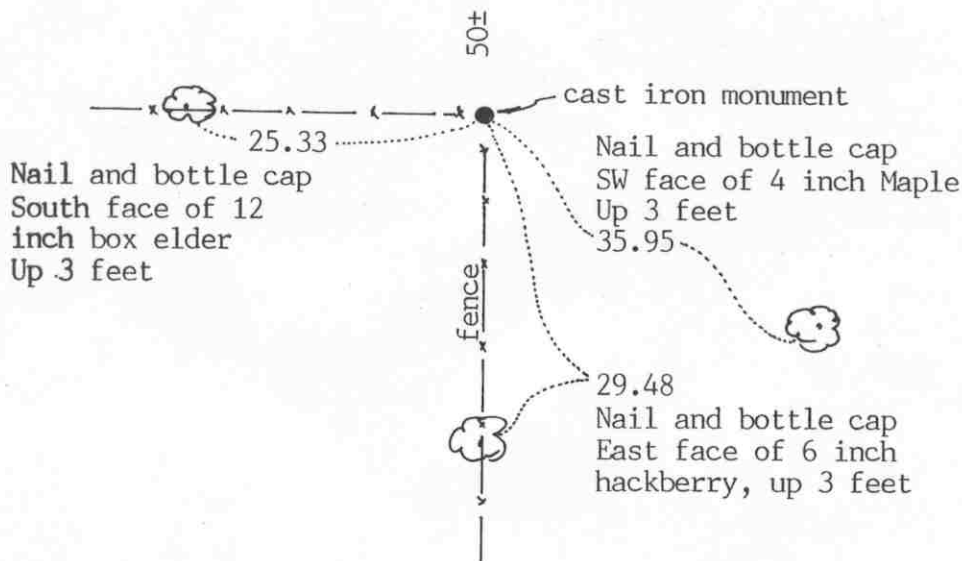
Certificate of Location of Government Corner

SKETCH OF REFERENCE TIES
(NO SCALE)

LOUGHANAN LAKE

SECTION 6

SECTION 5

Statement of evidence relative to this corner location on sheet 2

I hereby certify that this document
was prepared by me or under my
direct supervision.

Willard Pellinen
Willard Pellinen
McLeod County Surveyor
License No. 9626

Date August 24, 1991

OFFICE OF THE COUNTY RECORDER
MCLEOD COUNTY, MINNESOTA.

I hereby certify that this document was filed in this
office at 9 o'clock A.M. on the 27th day
of August, 1991.

Armen Ostlie, County Recorder

By _____, Deputy

Document No. 240568

EAST QUARTER corner, Section 6, Township 117 North, Range 29 West*Certificate of Location of Government Corner*

1856. The original government survey was run by A.H. Runyon. The notes show he set a meander corner 33 feet south of the quarter corner which was in the lake. The government plat shows the meander corner to be $14\frac{1}{2}$ feet north of the quarter corner.

December 16, 1974. McCombs Knutson Associates (Dickman Knutson, county surveyor) measured the east line of Section 6. Art Olson, 73 years old said the quarter corner is the fence intersection which is about 50 feet south of the shore of the lake. He had lived in the Southwest Quarter of Section 5 for 35 years. Fred Radunz agreed with Mr. Olson. A proration of the government distances along the east line of Section 6 would put the quarter corner 13 feet south of the fence corner.

August 1976. Knutson set a cast iron monument at the fence corner and took available ties.

June 15, 1990. We found the cast iron monument in good condition and took new reference ties.

NORTHEAST corner, Section 6, Township 117 North, Range 29 West

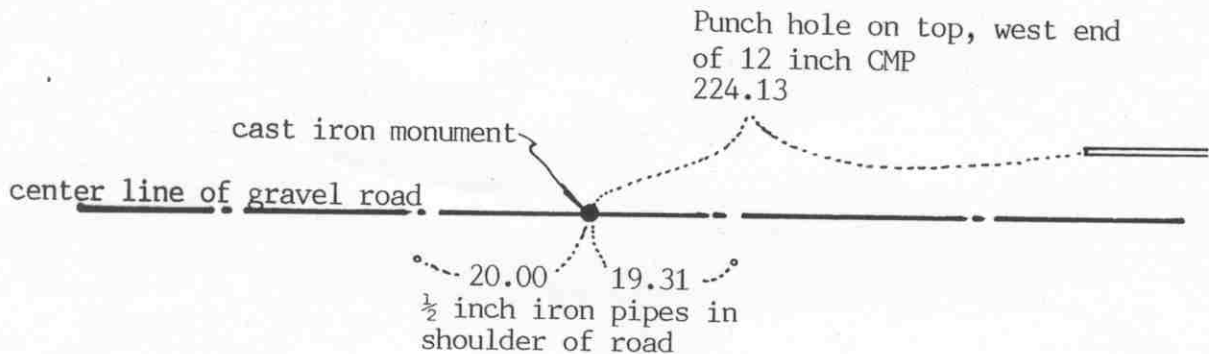


Certificate of Location of Government Corner

SKETCH OF REFERENCE TIES (NO SCALE)

SECTION 31, T118, R29

SECTION 32, T118, R29



SECTION 6, T117, R29

SECTION 5, T117, R29

Statement of evidence relative to this corner location on sheet 2

I hereby certify that this document was prepared by me or under my direct supervision.

Willard Pellinen

Willard Pellinen
McLeod County Surveyor
License No. 9626

Date April 13, 1991

OFFICE OF THE COUNTY RECORDER
MCLEOD COUNTY, MINNESOTA.

I hereby certify that this document was filed in this office at 9 o'clock A.M. on the 19th day of April, 1991.

Carmen Hotlie, County Recorder

By _____, Deputy

Document No. 238409

NORTHEAST corner, Section 6, Township 117 North, Range 29 West**Certificate of Location of Government Corner**

August, 1855. John Ryan of the General Land Office set a post at the corner and marked 3 aspens and 1 elm for bearing trees.

1914. Survey by Lew Merrill, land surveyor, shows an iron monument at the corner.

December 20, 1972. McCombs Knutson Associates (Dickman Knutson, county surveyor) chained the north line of Sections 5 and 6 and set a temporary northeast corner of Section 6. They set the corner on a proration of Merrill's distances between the north quarter corner of Section 5 and the north quarter corner of Section 6.

July 13, 1973. Knutson dug for the corner, John Tupa from Hutchinson with a backhoe. They found nothing. The corner was probably taken out when the road was graded in 1951. The residents say the road was graded quite a few feet lower at this point than it was before.

November 21, 1973. Knutson set a McLeod County cast iron monument at the center line of the road on a proration of Merrill's distances and took available ties.

May 4, 1990. We found the monument in good condition and took new reference ties.

NORTH QUARTER corner, Section 6, Township 117 North, Range 29 West

Certificate of Location of Government Corner

SKETCH OF REFERENCE TIES

(NO SCALE)

SECTION 31, T 118, R 29

Nail and disc
East face of post
by tel. ped.

132.47

Nail and disc
W'ly face of post by
telephone pedestal
128.34

3/4 inch iron pin

8.2

center line of gravel road

East edge of sign post
Up 5 feet

73.52

"As built" center line of
State Highway No. 15

SECTION 6, T 117, R 29

Statement of evidence relative to this corner location on sheet 2

I hereby certify that this document
was prepared by me or under my
direct supervision.

Willard Pellinen

Willard Pellinen
McLeod County Surveyor
License No. 9626

Date 6/9/90

OFFICE OF THE COUNTY RECORDER
MCLEOD COUNTY, MINNESOTA.

I hereby certify that this document was filed in this
office at 2 o'clock P.M. on the 21st day
of June, 19 90.

Carmen Ostlie, County Recorder

By Jan Letrick, Deputy

Document No. 234009

Certificate of Location of Government Corner

August, 1855. John Ryan of the General Land Office established this corner. He set a post and had reference ties to 2 bearing trees.

State Highway No. 15 right of way map shows a 4 inch by 4 inch oak stake 18 inches lone over a 12 inch square stone $3\frac{1}{2}$ feet below the road surface.

May, 1969. State Highway Department crew dug for the corner and found a 2 inch iron pipe with an aluminum cap, down 16 inches below the road surface. They placed a $\frac{3}{4}$ inch by 24 inch iron pin above a + on the monument.

December 20, 1972. McCombs Knutson Associates (Dickman Knutson, county surveyor) found the iron pin 8.2 feet west of the center line as shown on the right of way map. They took reference ties.

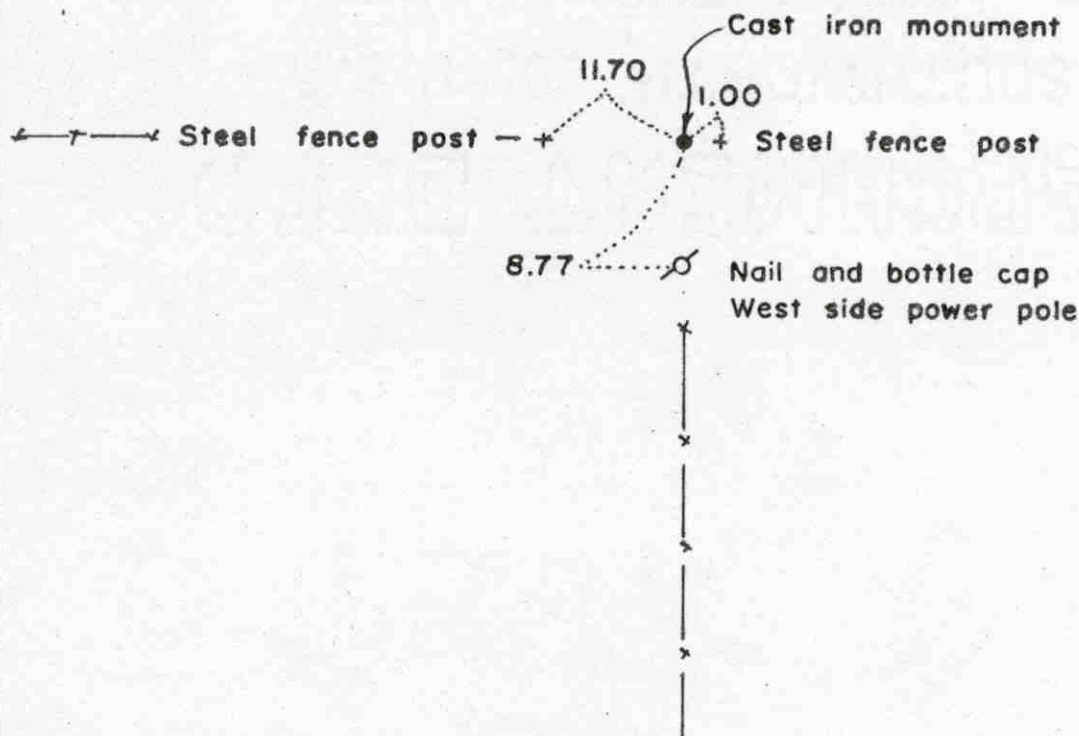
April 7, 1989. We found the iron pin but all the reference ties were destroyed. We took new reference ties.

Northeast corner, Section 1, Township 117 North, Range 30 West

Certificate of Location of Government Corner



SKETCH OF REFERENCE TIES
(NO SCALE)

Statement of evidence relative to this corner location on sheet 2

I hereby certify that this document
was prepared by me or under my
direct supervision.

Willard Pellinen
Willard Pellinen
McLeod County Surveyor
License No. 9626

Date 2/6/89

OFFICE OF THE COUNTY RECORDER
MCLEOD COUNTY, MINNESOTA.

I hereby certify that this document was filed in this
office at 3 o'clock P.M. on the 9th day
of Feb, 19 89.

Carmen Istlie, County Recorder
By _____, Deputy

Document No. 226884

NORTHEAST corner, Section 1, Township 117 North, Range 30 West

Certificate of Location of Government Corner

This corner was never set by the Government in the original survey because it fell in a Lake. In 1855, John Ryan of the Government Land Office set a meander corner 38.40 chains (2534.4 feet) north of the east quarter corner of Section 1.

1914 survey by E.L.Higgins shows an iron pin at the meander corner. His distance from the east quarter corner was 2547 feet.

In December 1968, we found a 1 inch diameter iron pin 2542.03 feet north of the east quarter corner and in January, 1969, we found a 1 inch diam. iron pin 135.32 feet north of the meander corner in the dry lake bed in line with a fence to the west and south. Mr. Art McRaith, 77 years old, in the Southeast of Sec. 36, 118, 30, all his life, said these fences are on the section lines and Mr. Arthur Radunz, 63 years old, and in the Northeast Quarter of Sec. 1 since 1936 agrees. We set a cast iron monument in place of the found iron pin at the NE corner. In August, 1988, we measured the east line of Section 1, and had a distance of 2677.35 feet from the northeast corner to the east quarter corner and a distance of 2676.98 feet from the east quarter corner to the southeast corner of Section 1, compared with the government distance of 2640.00 between each corner.

There being no evidence to the contrary, we accept the iron pin found at the northeast corner (now a cast iron monument) as the true northeast corner of Section 1.

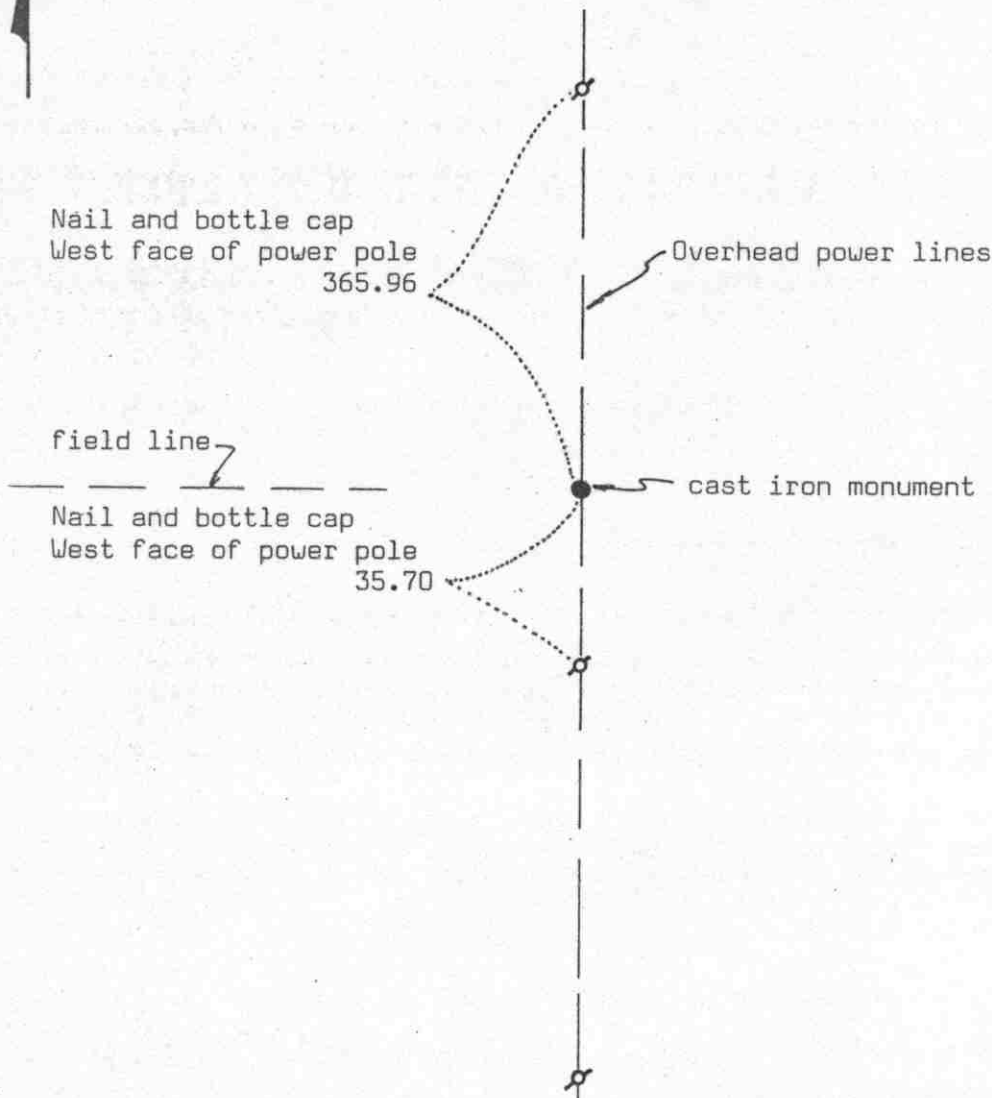
EAST QUARTER corner, Section 1, Township 117 North, Range 30 West

Certificate of Location of Government Corner



SKETCH OF REFERENCE TIES

(NO SCALE)

Statement of evidence relative to this corner location on sheet 2

I hereby certify that this document
was prepared by me or under my
direct supervision.

Willard Pellinen
Willard Pellinen
McLeod County Surveyor
License No. 9626

Date 3/30/89

OFFICE OF THE COUNTY RECORDER
MCLEOD COUNTY, MINNESOTA.

I hereby certify that this document was filed in this
office at 3 o'clock P.M. on the 6th day
of April, 19 89.

Carmen Doolie, County Recorder

By _____, Deputy

Document No. 227616

EAST QUARTER corner, Section 11, Township 117 North, Range 30 West

Certificate of Location of Government Corner

This corner was originally set in 1855 by John Ryan of the Government Land Office. He set a post with reference ties to 2 bearing trees.

1917. E. L. Higgins' survey notes show this corner to be 2547 south of an iron monument at the meander corner No. 40.

December, 1968. McCombs Knutson Associates, Dickman Knutson, County Surveyor, found a 2 inch diameter iron pipe 2542.03 feet north of an iron monument found at the meander corner. This pipe was on a power pole line running north and south and in line with a field line running west.

November 11, 1987. We measured the east line of Section 6 and found the east quarter corner gone. We reset an iron pipe at the distances shown on MKA surveys.

December 9, 1988, we took reference ties to the iron pipe and will set a cast iron monument in the spring.

We believe the 2 inch diameter iron pipe found in 1968 had perpetuated the correct location of the quarter corner.

We measured 2676.98 feet to the southeast corner and 2677.35 feet to the northeast corner of Section 6.